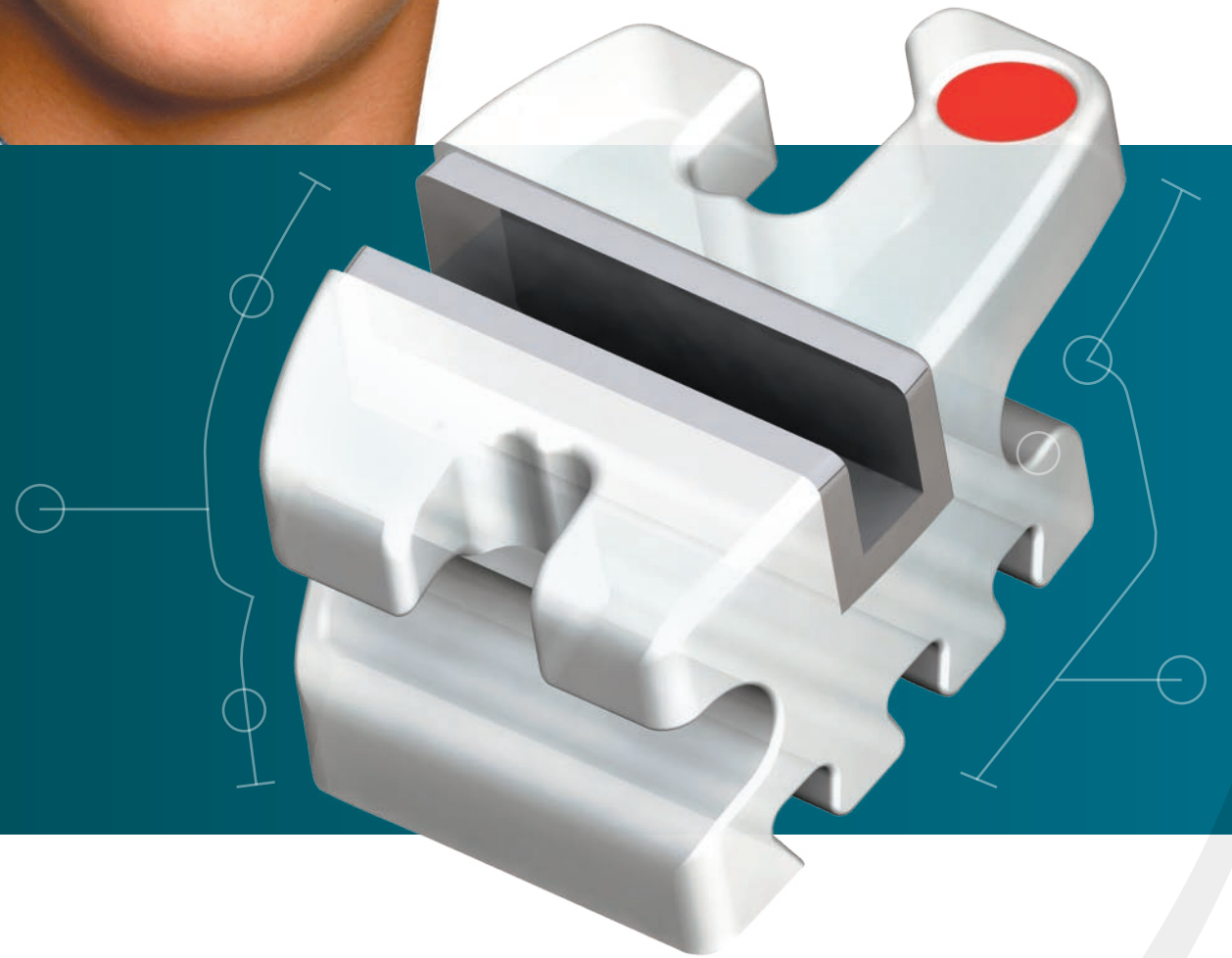


*The Classic  
Alternative.*



**Lucent™**  
METAL-LINED COMPOSITE  
BRACKET SYSTEM  
by Orthodontic Design and Production, Inc.

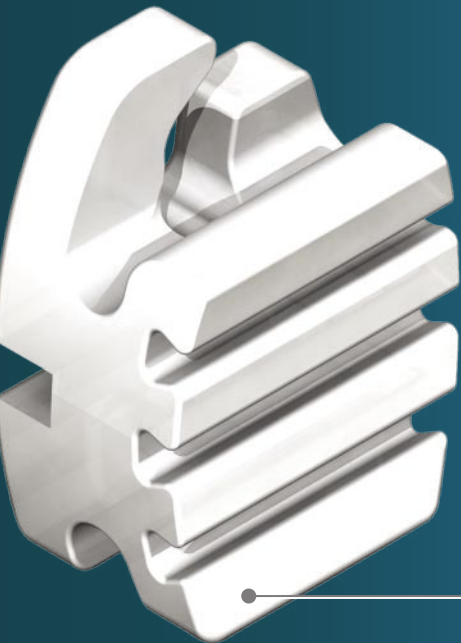


# Beautifully Functional.

ODP's attractive, comfortable Lucent™ composite brackets feature a nickel-free silver alloy-lined archwire slot that makes them a safe alternative for nickel-sensitive patients. The metal liner is precisely integrated into the bracket body, creating a pleasantly aesthetic device that delivers the sliding mechanics of a metal slot. To find a distributor or learn more about our products visit us on the web at [www.odpinc.com](http://www.odpinc.com).



**Lucent™**  
METAL-LINED COMPOSITE  
BRACKET SYSTEM  
by Orthodontic Design and Production, Inc.



## A Strong Mechanical Bond. Every Time.

ODP's Lucent™ brackets feature a distinctively designed dovetailed base for increased surface contact, allowing for excellent adhesion.

The brackets are designed with a porous coating that provides millions of additional under cuts that firmly grip the adhesive. As a result, additional primer agents are not required to bond Lucent™ brackets to the tooth's enamel.

Lucent™ brackets feature superior retention and easy debonding characteristics.

**NICKEL FREE METAL-LINED SLOT**  
for improved sliding efficiency, strength, and accurate positioning

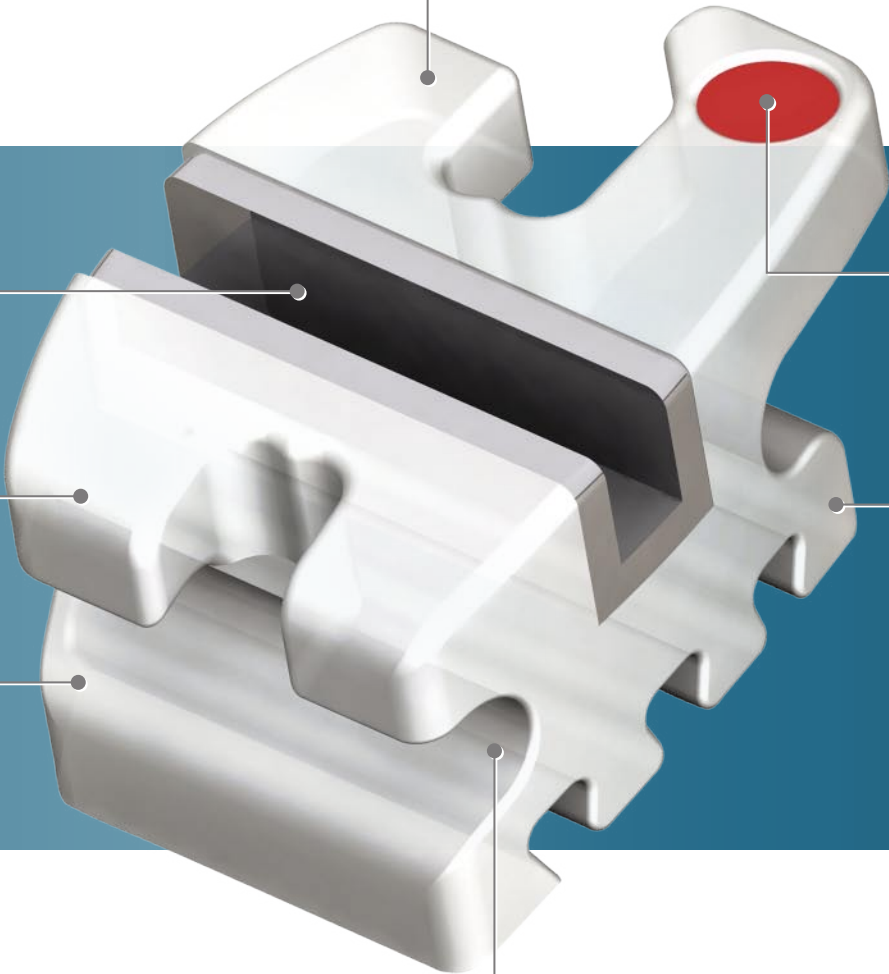
**CONTOURED TIE WINGS**  
for added patient comfort

**MECHANICAL LOCK BASE with DOVE TAIL GROOVE**  
for increased retention

**ROUNDED CORNERS**  
for enhanced patient comfort

**COLOR ENHANCED ID**  
for easy identification

**COMPOUND CONTOUR BASE**  
for an ideal bracket fit



**AMPLE TIE WING AREA**  
for easy bracket ligation

## Powerfully Flexible.

The special composite formulation from which the device is manufactured produces a bracket that displays a high tensile strength. The result is a strong polyurethane bracket with superior sliding mechanics that are equal to or greater than stainless steel brackets.

Available in Roth, MBT, and Standard Edgewise prescriptions, Lucent™ composite brackets offer the pleasing aesthetics and comfort desired by patients, along with the clinical functionality demanded by doctors.

